



SMARTTEMP

SMARTTEMP

ENSURE THE RIGHT CONDITIONS
— EVERY TIME.

SmartTemp is a compact, wireless sensor that continuously **monitors temperature** to protect valuable assets during storage and transportation. By logging data internally, it ensures **no data is lost**—even when network connectivity is unavailable.

SmartTemp helps keep operations **eco-friendly and efficient** by maintaining optimal environmental conditions and reducing unnecessary energy use. **Certified to EN 12830 and NIST standards**, it delivers reliable, precision-grade measurements that meet strict quality requirements for professional environments.

Easily connect SmartTemp to the SignMetrix dashboard to visualize condition history, analyze trends, and receive instant alerts when readings fall outside of optimal ranges.

SmartTemp makes environmental monitoring simple, scalable, and sustainable.

- **2-year** service life
- **IP67** waterproof & dust-proof
- **Operating temperature** -22 °F ~ 104 °F



How does SmartTemp ensure reliable temperature tracking?



CONTINUOUS DATA LOGGING

Stores temperature readings internally to prevent data loss.



NOTIFICATIONS

Get notified when conditions exceed thresholds.



CERTIFIED ACCURACY

EN 12830 and NIST certified for dependable monitoring.



ECO-FRIENDLY OPERATION

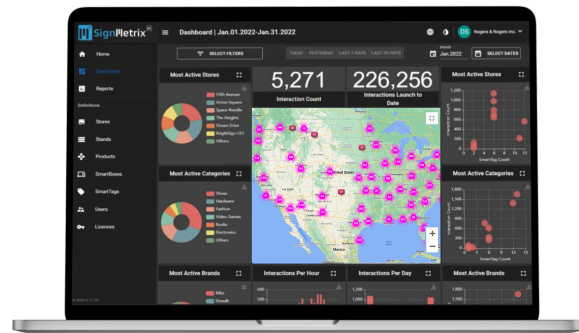
Supports sustainable, energy-efficient performance.

Compact Design



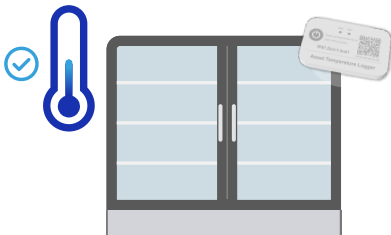
Small, discreet, and deployable anywhere.

Temperature Measurement



Monitor asset temperature in real time through the SignMetrix dashboard.

Simple to set up & use



1. **Place** SmartTemp in storage areas, transport containers, or display units.
2. **Connect** to the SignMetrix dashboard.
3. **Monitor** and **analyze** temperature data in real time.

[CONTACT US](#)

Start Monitoring Smarter. Try SmartTemp today!